



SANDALYECİ

CONTRACT FURNITURE





CAPABILITY STATEMENT

Table of Contents

- 01. Company Profile
- 02. Organization & Our Team
- 03. Our Products & Services
- 04. Our Production
- 05. Our References





01 Company Profile

Company	Sandalyeci
Industry	Furniture
Founded	2002
Headquarters	Izmir, Turkey
Company Type	Privately Held

Dubai Washington, D.C. Minsk Zurich
Toronto Paris Chisinau Alba Prague Nairobi
Odessa İstanbul Bucharest Astana London
Belgrade St. Petersburg Almaty İzmir



2,500
Products

1
Factory

Total **242** Employees,
191 Skilled Craftsman



Providing Service in
21
Showrooms

3,000 sqm.
Headquarters

over
20,000
Happy Clients

Operating in
16
Countries

Deploying Products
to more than
60
Countries

Mission

INDUSTRIALIZING CRAFTSMANSHIP WE EXIST

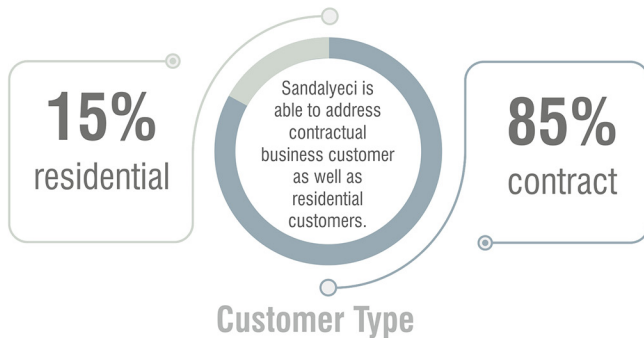
Bringing industrial craft products designed at the highest quality standards with every point of public living spaces.

Vision

SECTOR LEADER IN CONTRACT FURNITURE WE WANT

to carry out our sector leader position in local market to international markets we exist by materializing timeless and unique designs with industrial craftsmanship.

CONTRACT FURNITURE



MONTHLY ACTIVITIES

10,000

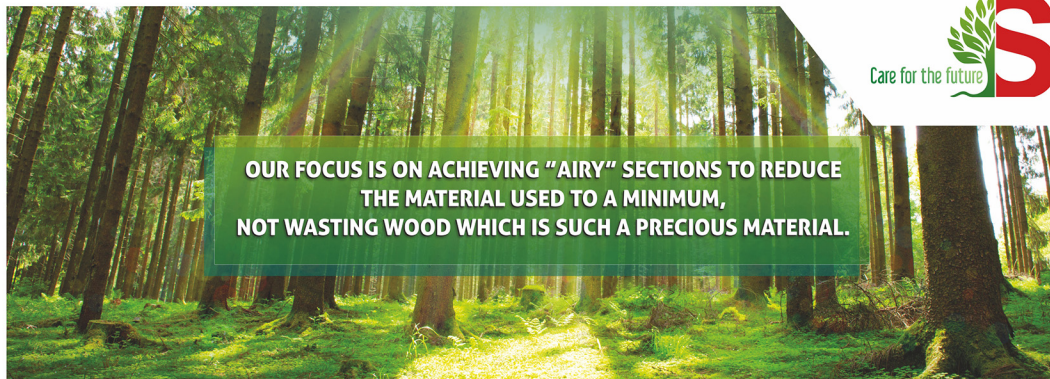
Products
Produced averagely
(Single Items)

50

Contract Projects
averagely



SUSTAINABILITY



SUSTAINABILITY

Solar Energy

100% of our energy need is covered by solar energy.



Pioneering Excellence in Global Branding

Sandalyeci has been proudly included in the Turquality Program, marking a significant milestone as the first contract furniture brand among 226 prestigious Turkish brands. This exclusive program, supported by the Turkish government, empowers leading companies to strengthen their global presence, enhance brand value, and accelerate international growth.





02 Organization & Our Team

Our Team

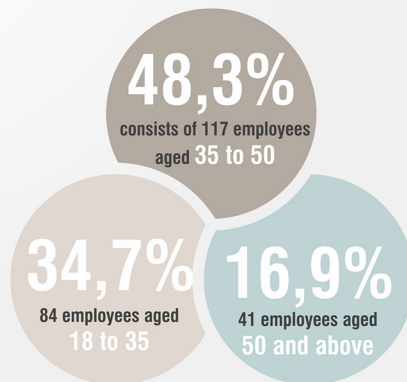
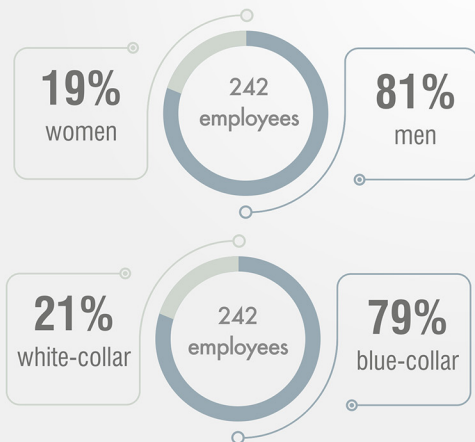


Our Team

Our organization is comprised of a dedicated team of 242 employees, working together towards our shared objectives. Within our workforce, 46 employees, representing 19%, are women, while 196 employees, making up 81%, are men.

Our workforce is composed of 21% white-collar and 79% blue-collar employees, reflecting a strong operational foundation. Among our white-collar employees, 73% completed higher education, demonstrating a highly skilled and educated team.

Our workforce is diverse in experience and age, with 34.7% of our team—84 employees—between the ages of 18 and 35, bringing energy and fresh perspectives. The largest segment, 48.3%, consists of 117 employees aged 35 to 50, combining experience with dynamic leadership. Additionally, 16.9% of our workforce, totaling 41 employees, are 50 and above, contributing with their extensive knowledge and expertise.



Design Team



Yağmur Yazıcı Kılıç
Designer



Deniz Gencin
Designer



Marah Chritah
Designer



Nevser Açıkgöz
Designer



Melis Sena Özbaş
Designer





Our Products & Services



Our Products & Services

Product Family



DESIGN STUDIO WOOD CHAIRS ARMCHAIRS
TABLE COFFEE SHOPS CUSTOMIZATION
CHAIRS AND MORE

CAFES RESTAURANTS CONSOLES DURABILITY
EQUIPMENT SOFAS
**CHAIRS
HOTELS**



BAR SOFAS
BENCHES
CAFE INDOOR TABLE TOP
LOUNGES DESIGN
DESIGN STUDIO MODERN CUSTOMIZATION
BAR CHAIRS TABLE

SUN LOUNGER
POUFS
RESTAURANTS
TABLE BASES
CAFES
HOTELS
BOOTHES DURABILITY
DESIGN CUSTOMIZATION **WOOD**
CAFES



TOP
POUFS
HOTEL
CHAIRS TABLE
RESTAURANTS
CONSOLES CUSTOMIZATION
WOOD BENCHES DESIGN SOFAS CHAIRS METAL
COFFEE SHOPS





Tailor - made Products

Wood
Finish



Rubberwood
Table Tops

Upholstery
Fabrics



Sandalex
Table Tops

Gladis
Table Tops

Tailor - made Products



COMFORT, AESTHETICS, ERGONOMICS



COMFORT, AESTHETICS, ERGONOMICS



COMFORT, AESTHETICS, ERGONOMICS



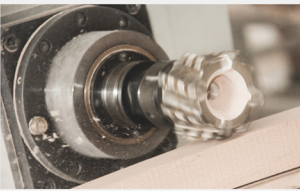


04 | Our Production

Industrializing Craftsmanship

Our raw materials and machineries allow us to create limitless options in design while protecting durability.

Company adopted 5S tools for production management starting from 2016. These tools have an direct effect on quality while preparing background for lean manufacturing and eventually industry 4.0 in the long term.



Raw Materials



Machinery & Tools

Eight 5 Axis CNC:
Chair parts design
and production



CREAFORM AMETEK
3D Scanner



3 Axis CNC:
Fabric and
Leather cutter



3 Axis CNC:
Table top design
and production



TROTEC
Humidity
Measurement



4 Axis CNC Lathe:
Table leg design and
production

05 Our References



Inspirational References

Çukurova Airport / Turkish Airlines CIP Lounge

Adana - TURKEY



Inspirational References

Çukurova Airport / Turkish Airlines CIP Lounge

Adana - TURKEY



Inspirational References

Kayseri Airport / Turkish Airlines CIP Lounge

Kayseri - TURKEY



Inspirational References

Kayseri Airport / Turkish Airlines CIP Lounge

Kayseri - TURKEY



Inspirational References

Gaziantep Airport / Turkish Airlines CIP Lounge

Gaziantep - TURKEY



Inspirational References

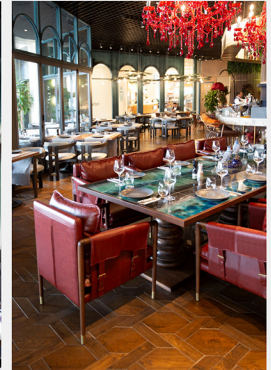
Gaziantep Airport / Turkish Airlines CIP Lounge

Gaziantep - TURKEY



Inspirational References

Günaydin Restaurant
Izmir - TURKEY



Inspirational References

Bulbash Restaurant
Minsk - BELARUS



Inspirational References

Hotel Pullman Istanbul Airport and Convention Center

Istanbul - TURKEY



Inspirational References

Gatsby Restaurant
Washington D.C. - USA



Inspirational References

Istinye Park Izmir, Food Court

Izmir - TURKEY



Inspirational References

Seraf Restaurant
Istanbul - TURKEY



Inspirational References



Kyiv Food Market
Kyiv - UKRAINE



Odessa Food Market
Odessa - UKRAINE

Inspirational References

Alma Spencer

Tel Aviv - ISRAEL



Inspirational References

Damac Tower by Paramount

Dubai - UAE



Inspirational References

Restaurant Lebyazhij
Minsk - BELARUS



Inspirational References

Divan Brasserie Fuaye Restaurant

Istanbul - TURKEY



Inspirational References

Divan Brasserie Fuaye Restaurant

Istanbul - TURKEY



Inspirational References

Cups & Clouds Cafe
Istanbul - TURKEY



Inspirational References

Günaydin Restaurant

Istanbul - TURKEY



Inspirational References

Köşkeroglu Restaurant

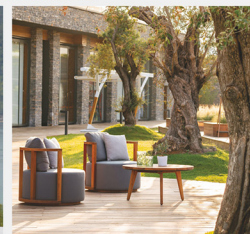
Istanbul - TURKEY



Inspirational References



Lujo Hotel
Muğla - TURKEY



Inspirational References

Çay Saati Cafe, Istanbul Airports

Istanbul - TURKEY



Inspirational References

Swissôtel The Bosphorus

Istanbul - TURKEY



USA
BD|NY
BOUTIQUE DESIGN TRADE FAIR

CA
RC
Show
RESTAURANT & CAFE EQUIPMENT SHOW

UAE
INDEX
INDEX

SA
INDEX
SAUDI
ARABIA

FR
SIRHA+LYON
The World Hospitality and Food Service Event

CH
igehe

UK
De on
COUNTY SHOW

NATIONAL
RESTAURANT
ASSOCIATION
SHOW

IDF
OMAN

HRC

2014 ANNUAL
Hotel, Motel
& Restaurant
Supply Show
OF THE AMERICAN

UK

INTERIOR
MEBEL

RU

PIR EXPO

KZ

HoRex
Qazaqstan

INTER
BUILD
EXPO

HOMEDECO
KAZAKHSTAN

Fairs We Have Been Participating In For Years



SANDALYECİ

CONTRACT FURNITURE



www.sandalyeci.com

